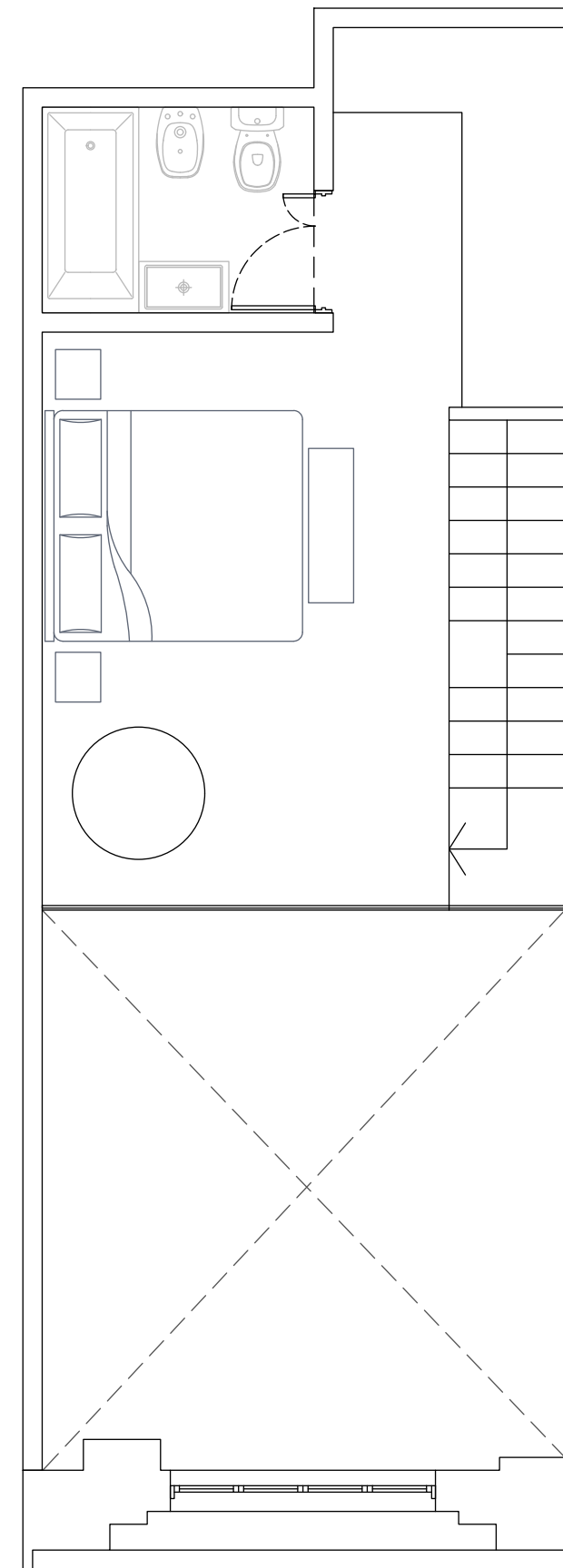
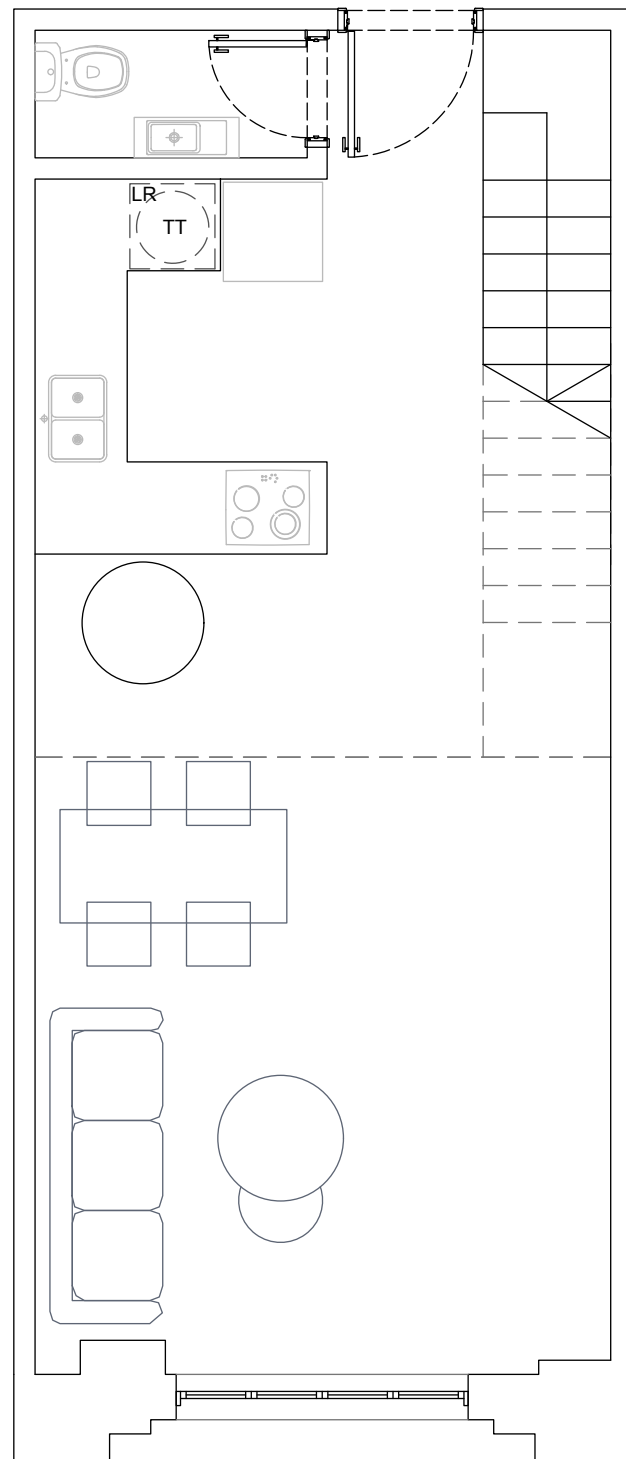


PISO 1  
UNIDAD 104/105/106/107

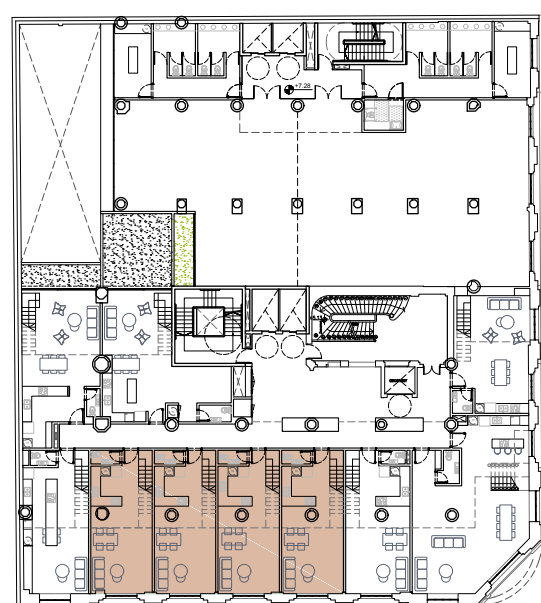
104 SUP. 41,19M2	106 SUP. 40,86M2
SUP. TOTAL 67,85M2	SUP. TOTAL 66,28M2
105 SUP. 40,97M2	107 SUP. 40,96M2
SUP. TOTAL 66,47M2	SUP. TOTAL 66,45M2

PISO 1  
UNIDAD 104/105/106/107 ENTREPISO

104 SUP. 26,66M2	106 SUP. 25,42M2
SUP. TOTAL 67,85M2	SUP. TOTAL 66,28M2
105 SUP. 25,50M2	107 SUP. 25,49M2
SUP. TOTAL 66,47M2	SUP. TOTAL 66,45M2



PLANTA



EP

