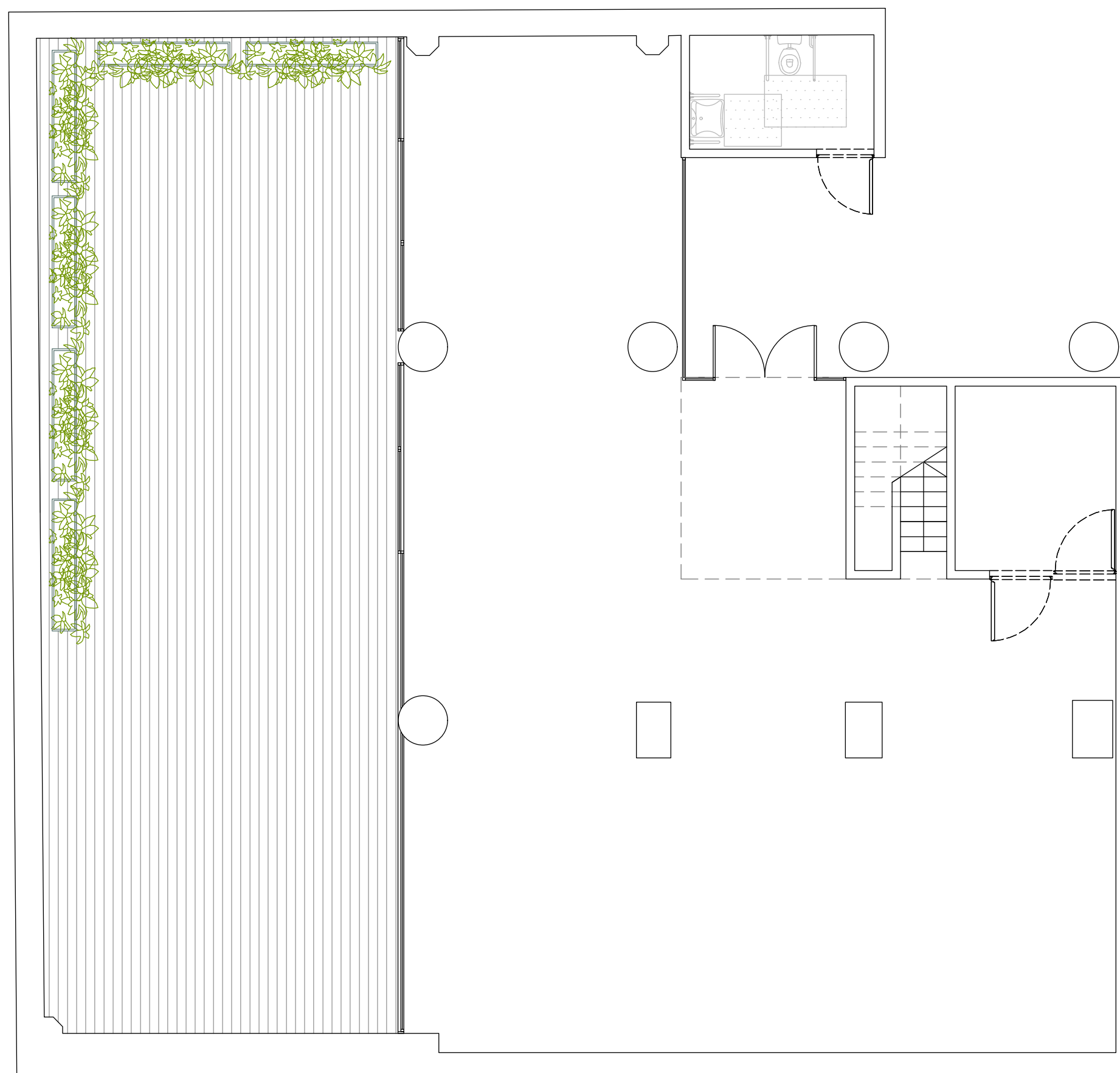




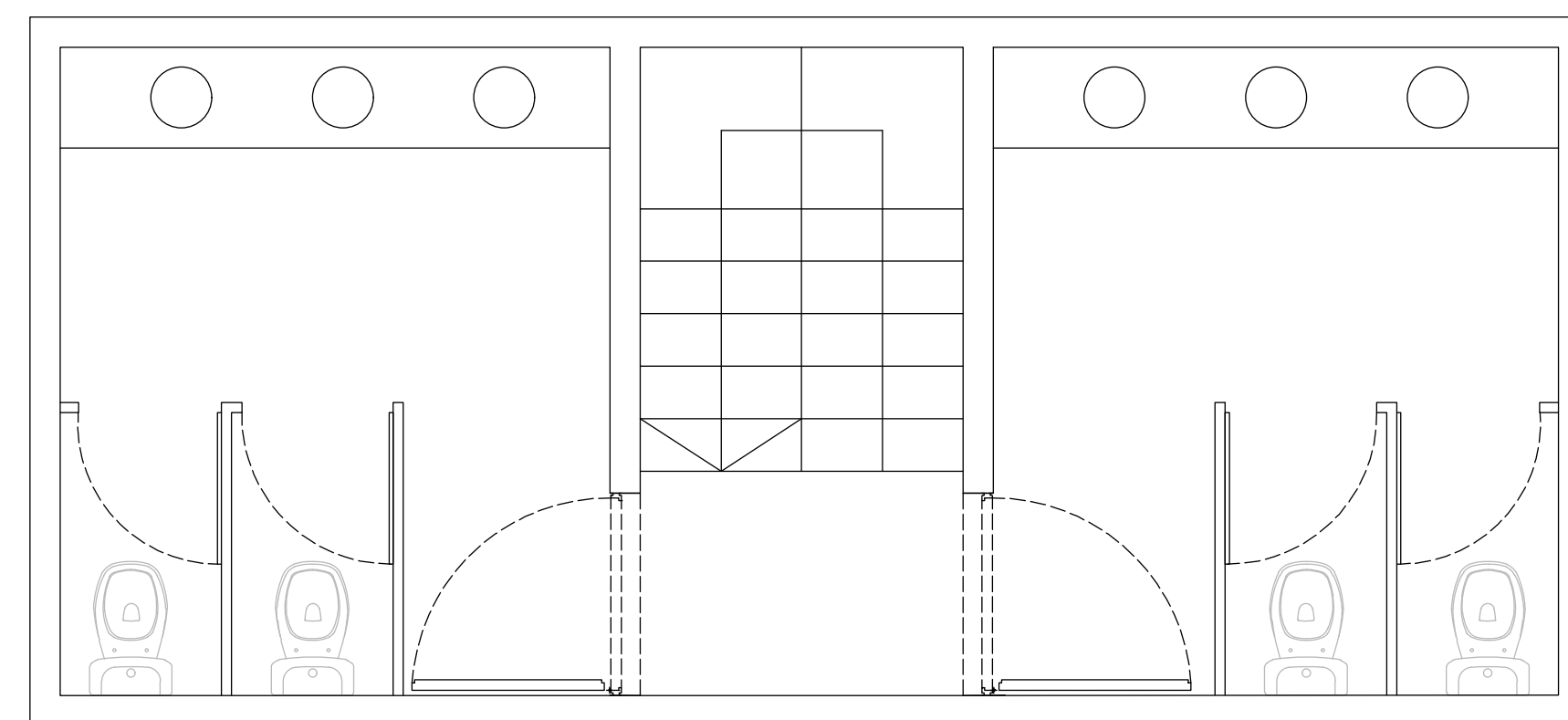
LOCAL GASTRONÓMICO C

SUP. 165,76M2
SUP. DESC. 110,65 M2
SUP. TOTAL 303,51M2



LOCAL GASTRONÓMICO B ENTREPISO

SUP. ENTREPISO 27,10M2
SUP. TOTAL 303,51M2



PLANTA BAJA



ENTREPISO

