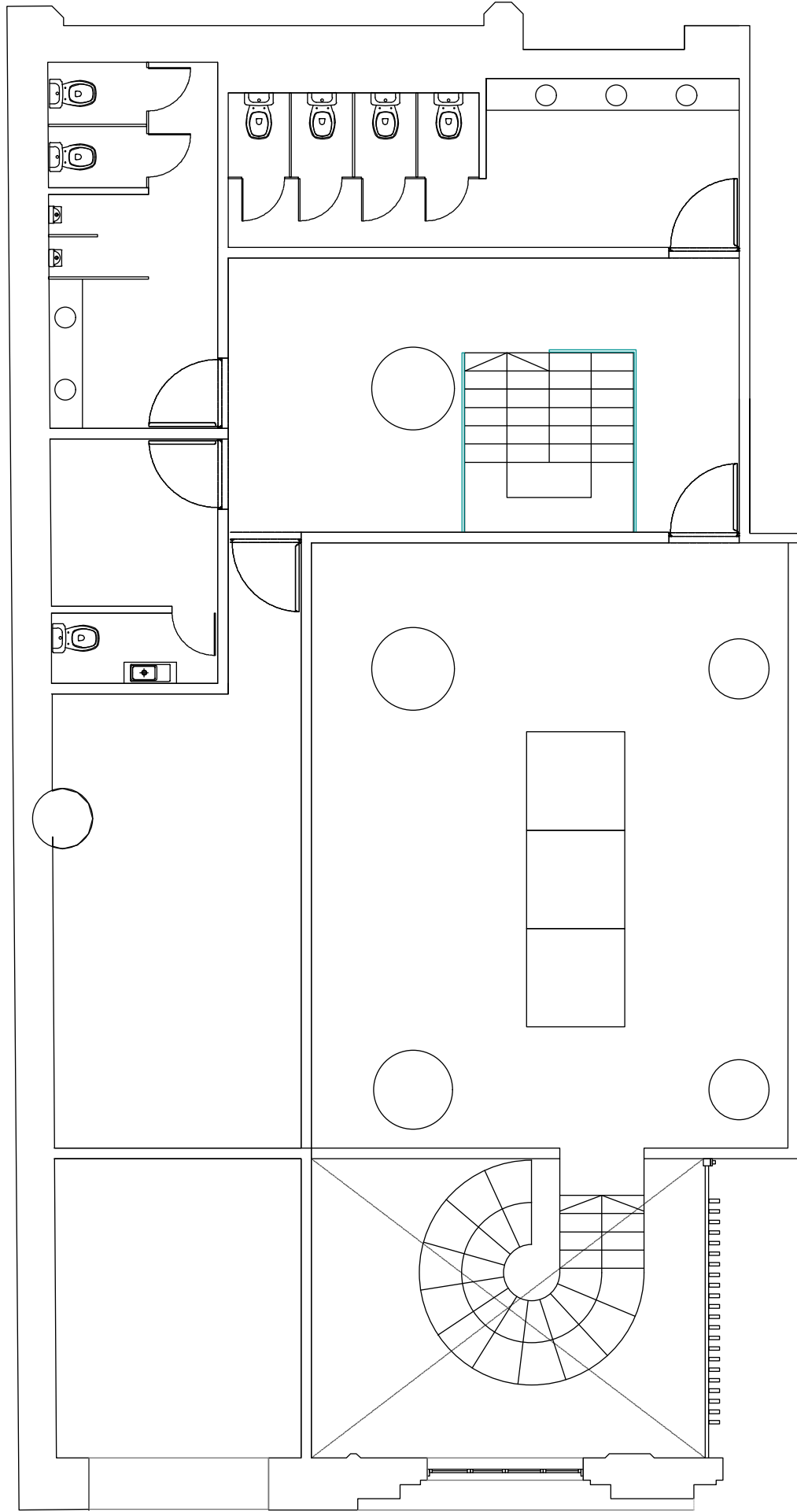
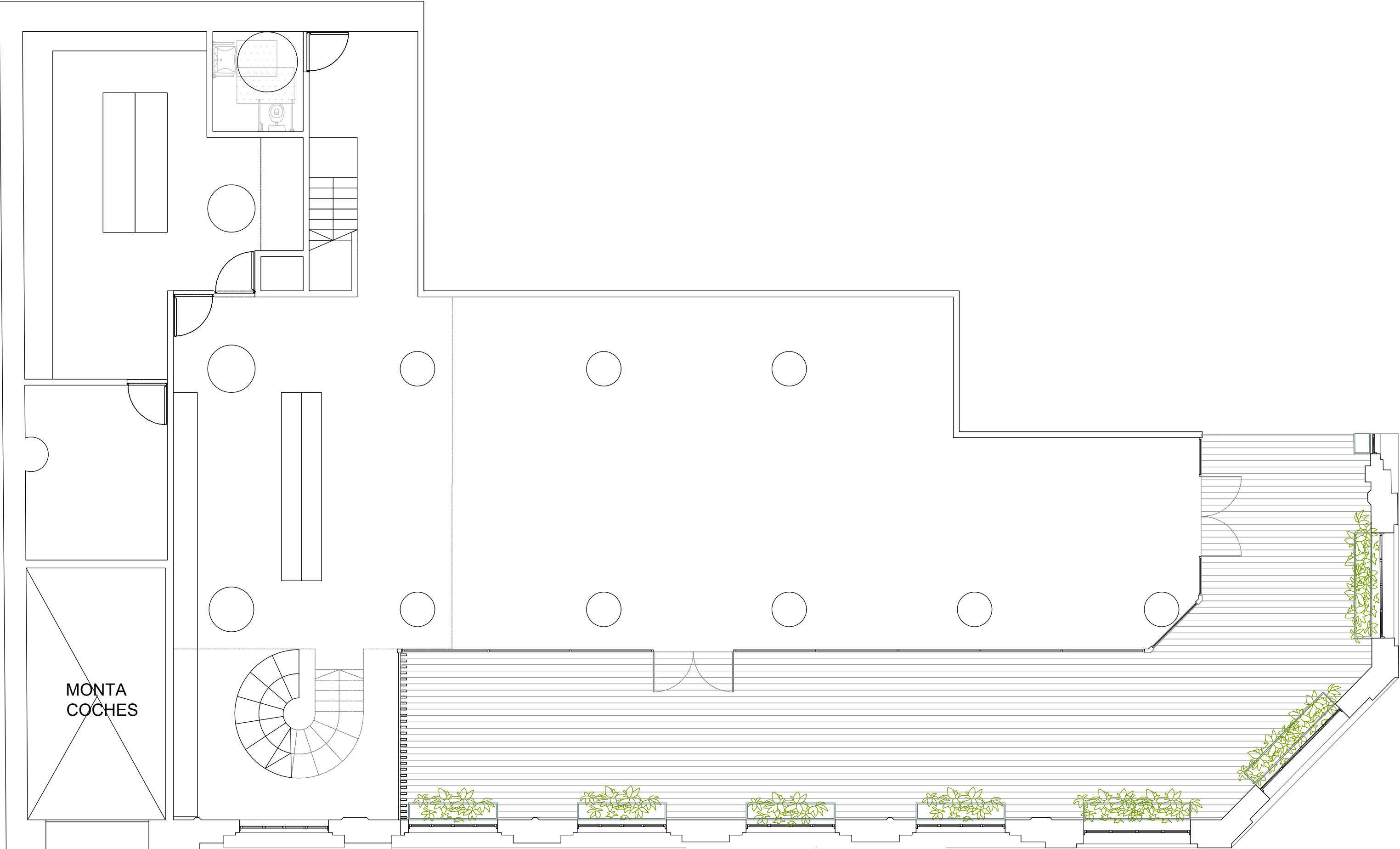


LOCAL GASTRONÓMICO A

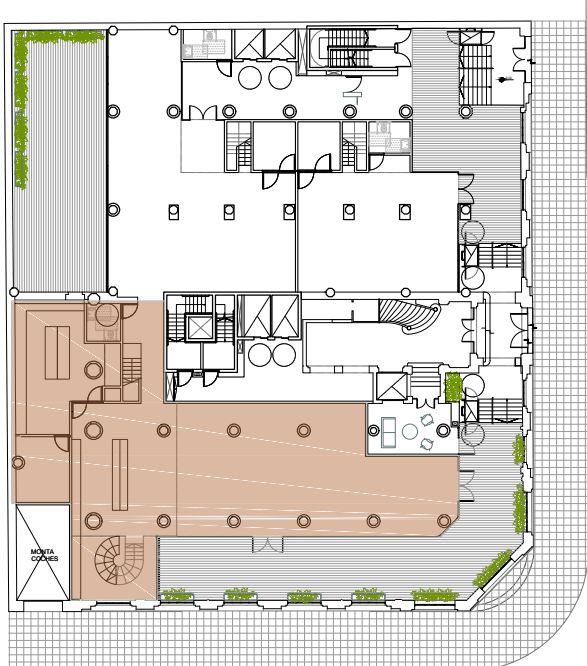
SUP. 331M2  
 SUP. RECOVA 151,14 M2  
 SUP. TOTAL 639,70M2

LOCAL GASTRONÓMICO A ENTREPISO

SUP. ENTREPISO 157,56M2  
 SUP. TOTAL 639,70M2



PLANTA BAJA



ENTREPISO

